

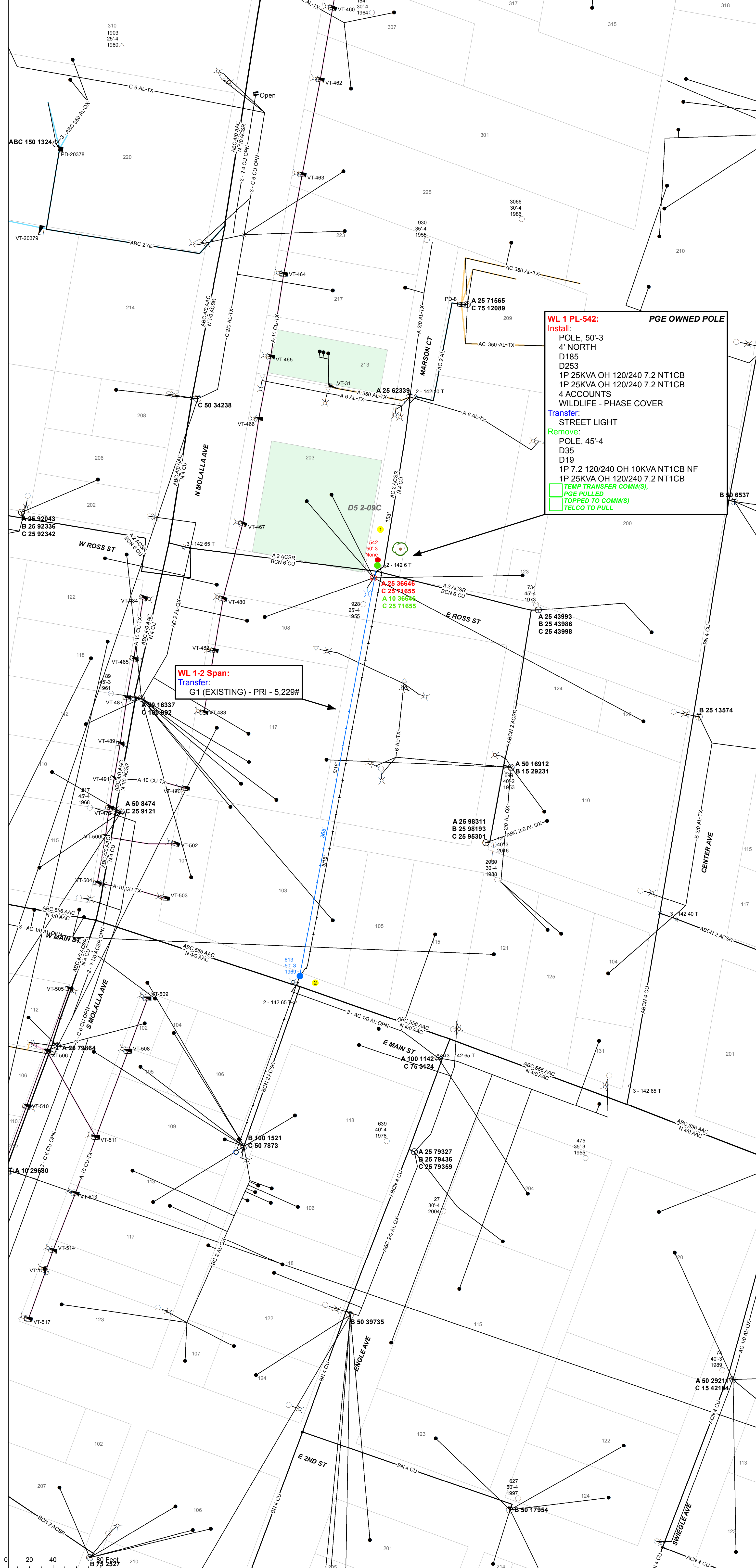
OVERHEAD LEGEND

- REMOVE/ABANDON FACILITIES
 - INSTALL FACILITIES
 - INSTALL ADDITIONAL FACILITIES/MODIFY FACILITIES
 - WORK LOCATIONS
- POLES**
- HT-CL — POLE CLASS (1, 2, 3, 4, H1, H2, S)
 - POLE HEIGHT
- FRAMING** TRANSMISSION & DISTRIBUTION (SEE CODES BELOW)
- D35 — FRAME DISTRIBUTION -LC10729, MU 0035 (3PH 8FT SGL LT TANG, PIN)
 - D19 — FRAME DISTRIBUTION -LC10718, MU 0019 (2 PH DE, DBL 8' LT ARM, POLY)
 - D253 — FRAME DISTRIBUTION -LC10718, MU 0253 (3PH 10' LT, ALLEY, TANG)
 - D185 — FRAME DISTRIBUTION -LC10716, MU 0185 (2PH 8FT SGL DE FIBERGLASS)

GUYING

(POS. LBS.)	5'16" OH	38' OH	71'6" OH	127' OH	38' DG	71'6" DG	117' DG
1 GUY	G1	G4	G7	G10	G16	G21	G27
2 GUYS	G2	G5	G8	G11	G17	G23	G30
3 GUYS	G3	G6	G9	G12	G18	G24	G31

LANDSCAPING NOTES
 WL1: PRE & POST- ASPHALT/
 CONCRETE CUT,
 REPLACE/REPAIR



WL 1 PL-542: PGE OWNED POLE
Install:
 POLE, 50'-3
 4' NORTH
 D185
 D253
 1P 25KVA OH 120/240 7.2 NT1CB
 1P 25KVA OH 120/240 7.2 NT1CB
 4 ACCOUNTS
 WILDLIFE - PHASE COVER
Transfer:
 STREET LIGHT
Remove:
 POLE, 45'-4
 D35
 D19
 1P 7.2 120/240 OH 10KVA NT1CB NF
 1P 25KVA OH 120/240 7.2 NT1CB
■ TEMP TRANSFER COMM(S)
■ PGE PULLED
■ TOPPED TO COMM(S)
■ TELCO TO PULL

WL 1-2 Span:
Transfer:
 G1 (EXISTING) - PRI - 5,229#

THINK SAFETY FIRST

ANY DEVIATION FROM THIS DESIGN MUST BE APPROVED BY THE PGE PROJECT MANAGER

CALL 811 BEFORE YOU DIG
 ATTENTION: OREGON LAW REQUIRES YOU TO FOLLOW RULES ADOPTED BY THE OREGON UTILITY NOTIFICATION CENTER. THOSE RULES ARE SET FORTH IN OAR 95A-001-0010 THROUGH 95A-001-0090 YOU MAY OBTAIN COPIES OF THE RULES BY CALLING THE OREGON UTILITY NOTIFICATION CENTER ADMINISTRATION @ (502-232-1987)
TO REQUEST UTILITY LOCATES CALL THE OREGON UTILITY NOTIFICATION CENTER, 811 AT LEAST 2 BUSINESS DAYS PRIOR TO EXCAVATION
 Know what's below. Call before you dig.

PGE CONSTRUCTION DRAWING
AS-BUILT VERIFICATION & NESC VIOLATIONS CORRECTED

Foreman: _____ Date: _____
 General Foreman: _____ Date: _____
 (Signature only required for field construction changes.)

SOPWENG REVIEW: _____ **ASBUILT BY DESIGNER:** _____
 DATE: 10/15/2018 SCALE: 1 in = 40 ft ACCOUNT: 1070001 RWS: 1000001400 JOB NO: M2522377

PGE
 TITLE: 2015 OH FITNES - REPLACE PL-542 AND SET BACK AWAY FROM ROAD
 CIRCUIT: MOLALLA-BUCKAROO SIZE: 34 x 22
 LOCATION: 208 MARSON CT (PL542) - XSTREET= E ROSS ST, MOLALLA, 97038
 DESCRIPTION: POLE 542 TOO CLOSE TO ROAD SHEET: 1 OF 1
 COUNTY: CLACKAMAS SECTIONS: DS209C WORK WITH:
 DESIGN BY: JOHN GUERRY PHONE: 503-310-2885 DRAWN BY: SARA MCCAUGHAN
 PORTLAND LINE CREW CENTER 3300 SE 17TH AVE PORTLAND, OR 97202 © PORTLAND GENERAL ELECTRIC CO. - ALL RIGHTS RESERVED